

A Simple Method for the Determination of Enantiomeric Excess and Identity of Chiral Carboxylic Acids

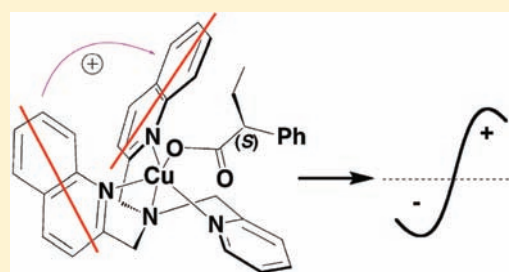
Leo A. Joyce,[†] Marc S. Maynor,^{†,§} Justin M. Dragna,[†] Gabriella M. da Cruz,[†] Vincent M. Lynch,[†] James W. Canary,^{*,‡} and Eric V. Anslyn^{*,†}

[†]Department of Chemistry and Biochemistry, The University of Texas at Austin, Austin, Texas 78712, United States

[‡]Department of Chemistry, New York University, New York, New York 10003, United States

S Supporting Information

ABSTRACT: The association between an achiral copper(II) host (**1**) and chiral carboxylate guests was studied using exciton-coupled circular dichroism (ECCD). Enantiomeric complexes were created upon binding of the enantiomers of the carboxylate guests to the host, and the sign of the resultant CD signal allowed for determination of the configuration of the studied guest. The difference in magnitudes and shapes of the CD signals, in conjunction with linear discriminant analysis (LDA), allowed for the identity of the guest to be determined successfully. A model was created for the host–guest complexes which successfully predicts the sign of the observed CD signal. Further, Taft parameters were used in the model, leading to rationalization of the observed magnitudes of the CD signals. Finally, the enantiomeric excess (ee) of unknown samples of three chiral carboxylic acid guests was determined with an average absolute error of $\pm 3.0\%$.



INTRODUCTION

Determination of the enantiomeric purity of chiral compounds is performed routinely in synthetic organic chemistry.^{1–7} Chiral carboxylic acids are common functional groups found in pharmaceuticals, as well as intermediates in the synthesis of complex natural products.^{8–11} Therefore, catalytic asymmetric methodologies have been commonly directed to the creation of chiral carboxylic acids.

High-throughput screening (HTS) has emerged as a means for discovery of asymmetric catalytic reactions.¹² A large number of reactions are carried out in parallel in order to screen for improvements in enantiomeric excess (ee) for a target reaction. These ee values are most commonly ascertained using either high performance liquid chromatography (HPLC) or gas chromatography (GC).^{13–16} Although these techniques are very accurate, they are unable to keep up with the number of samples that are created when several hundreds of reactions are run in parallel. Increasingly large numbers of samples also inherently increase the amount of solvent used, preparation time required, and cost incurred. For these reasons, there is a desire to create more efficient methods that can expedite the process of ee determination. Several methods have been successfully implemented, utilizing such techniques as NMR, fluorescence, UV/vis, or calorimetry.^{17–27} However, several of the procedures require chiral hosts created through extensive synthetic efforts. Additionally, many require that the analyte be derivatized before the analysis can be performed. For these reasons, it is desirable to create methods that avert these drawbacks.

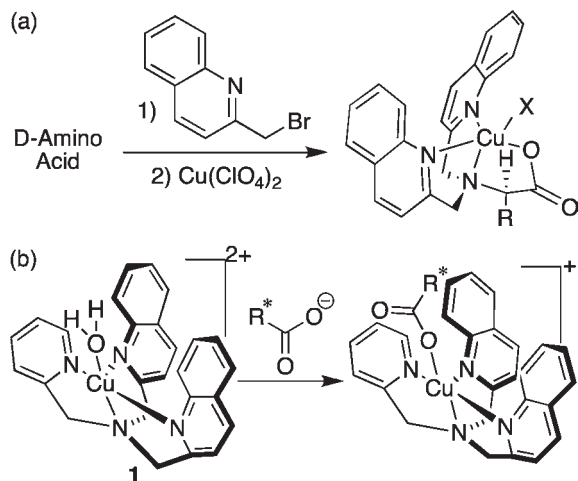
To this end, our group and others have focused on developing assays that allow the rapid determination of reaction success, in terms of both ee and yield.^{28–37} In one approach, enantioselective indicator displacement assays utilizing colorimetric indicators have been combined with pattern recognition techniques to find the ee of several types of chiral analytes, including α -amino acids, diols, and α -hydroxycarboxylic acids.^{28–30} In a disparate approach, metal-to-ligand charge transfer (MLCT) bands were analyzed using circular dichroism (CD) spectroscopy. We showed that this approach allows for the rapid determination of ee, in conjunction with concentration and analyte identity.^{31,32}

One form of CD, known as exciton-coupled circular dichroism (ECCD),³⁸ has often been applied by the Canary group,^{39–44} as well as others,^{45–51} for similar goals. The couplets seen in ECCD have allowed for determination of ee, as well as absolute configuration, of α -amino acids, β -amino alcohols, and primary amines.^{39–41} The approach from the Canary group begins with derivatization of the chiral analyte with quinoline chromophores, followed by complexation to a metal center. This complexation, to either Cu^{II} or Zn^{II}, brings the quinoline groups into proximity in a helical fashion. The helicity is determined by the stereocenter of the derivatized analyte, leading to enantiospecific CD spectra (Scheme 1a). We report herein a combined group effort to create ECCD methods for the analysis of chiral carboxylates that does not require prior derivatization of the analytes.

Received: June 21, 2011

Published: July 22, 2011

Scheme 1. (a) Protocol To Determine Absolute Configuration of Chiral Amino Acids and (b) Proposed Complex Formation between [(BQPA)Cu^{II}(ClO₄)₂] Host **1** and Chiral Carboxylate Guest



RESULTS AND DISCUSSION

1. Design Criteria. Our new approach involves the complexation of achiral [(BPQA)Cu^{II}(ClO₄)₂] host **1** with chiral carboxylic acids (Scheme 1b) and avoids the step of analyte derivatization. This approach finds its roots among classic work carried out by Pfeiffer, used to resolve certain chiral coordination complexes in the early days of coordination chemistry.^{42,43} He observed that racemic transition-metal complexes adopted chiral properties in the presence of chiral additives. The perturbation of the equilibrium between enantiomeric metal complexes led to mixtures of diastereomers, and hence, resolution of the metal complexes could be achieved.

Host complex **1** was selected for our purposes for two main reasons. First, its synthesis is straightforward. It can be prepared in three steps from commercially available starting materials.^{52–54} Second, an available coordination site on the copper center was expected to accommodate a chiral carboxylate anion. The analyte binding was postulated to cause a helical distortion of the complex geometry, the direction of which would be indicated by the guest's stereochemistry. This should allow the analysis to be performed directly on unmodified analytes. In addition to obviating analyte derivatization, the binding between host and guest occurs upon mixing, and the CD spectra can be obtained quickly using a robotically interfaced liquid controller that is commercially available from JASCO.

2. X-ray Analysis. We first set out to determine the geometry of complex **1**. It was expected that the tetradentate tripodal BQPA ligand would occupy four of the five coordination sites of the copper metal. This empty site would accommodate the carboxylate guest and release a molecule of solvent that had been occupying this coordination site. The crystal structure obtained (Figure 1) of host **1** confirmed the hypothesis about the coordination involving the metal center, with a molecule of water occupying the vacant coordination site. The copper(II) atom in this structure is best described as a distorted square pyramidal geometry with three nitrogen atoms and the water oxygen atom occupying the basal plane and one quinoline

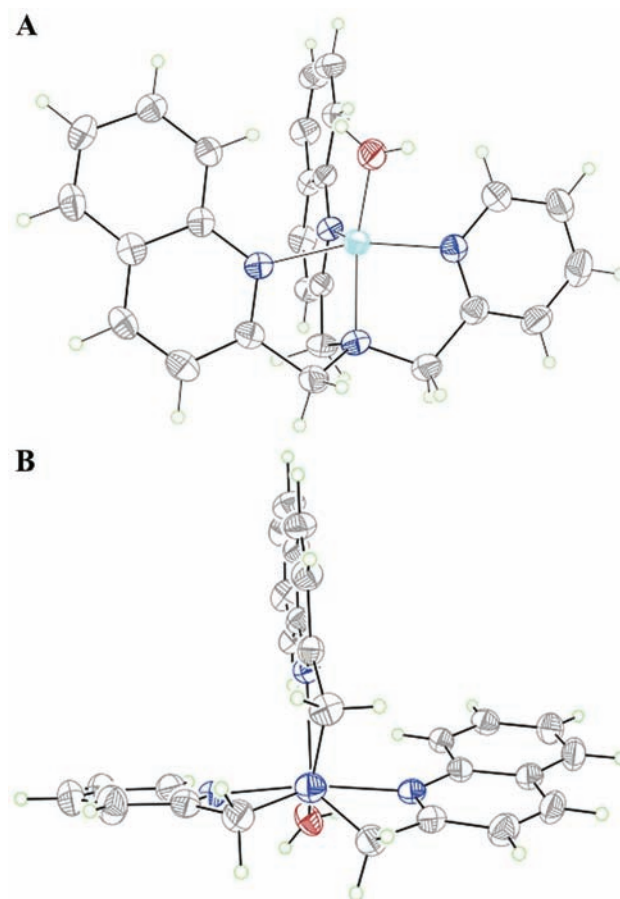


Figure 1. Two different views of copper complex **1**. Displacement ellipsoids are scaled to 50% probability, and counterions are omitted for clarity.

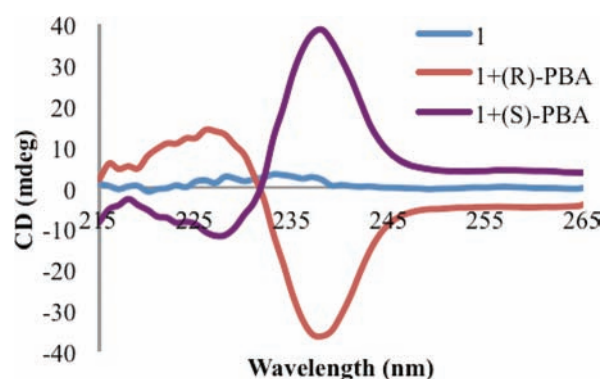


Figure 2. CD spectra of host **1** (0.5 mM) by itself and with each enantiomer of PBA (1.0 mM) in default buffer (75% MeCN/H₂O with 20 mM HEPES buffer at pH 7.4).

nitrogen atom coordinating in an apical position. The geometry is distorted toward trigonal bipyramidal, and indeed, Karlin described the analogous chloride complex as intermediate between these limiting geometries.⁵⁵ Both coordination geometries are capable of affording a twisted ligand conformation and thus an ECCD spectrum.⁵⁶

The chromophores are tilted, as can be seen from the two views provided in Figure 1. The solid state structure alternates between the two different helicities in the achiral C₂/c space

Chart 1. Chiral Guests: 2-Phenylbutyric Acetate (PBA), 2-Phenylpropionic Acetate (PPA), *O*-Acetylmandelic Acetate (AMA), α -Methoxy- α -trifluoromethylphenyl Acetate (MTP), 2-Bromopropionic Acetate (BPA), and 1-(*tert*-Butoxycarbonyl)-2-piperidinecarboxylate (PCA) That Were Used in This Study

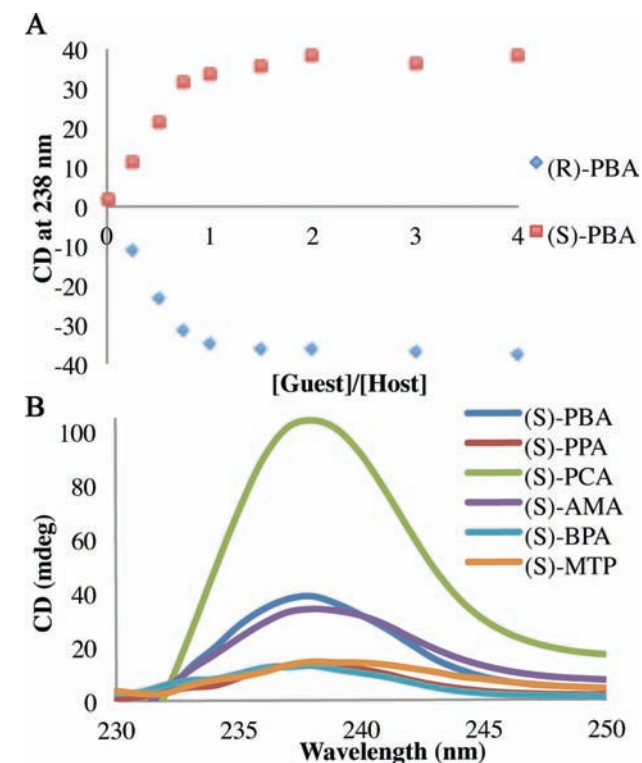
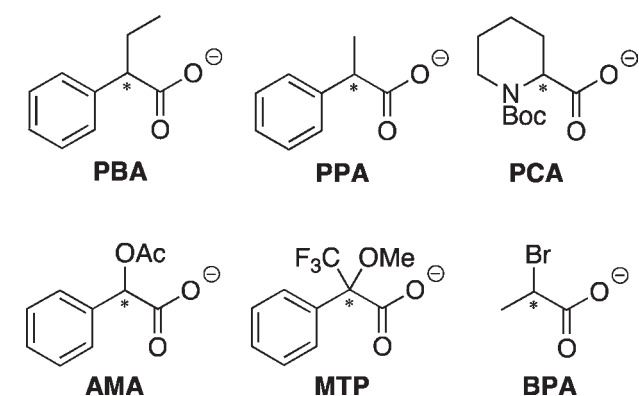


Figure 3. (A) Change in the CD signal at 238 nm with increasing concentration of indicated enantiomer of PBA (0–2 mM) in host **1** (0.5 mM) in default buffer. (B) CD spectra of host **1** (0.5 mM) with the (*S*)-enantiomer of each guest (1.0 mM) in default buffer.

group. However, upon complexation with a chiral guest in solution, it was expected that one twist would predominate and thus generate a detectable CD signal.

3. CD Analysis. Achiral host **1** alone does not give a signal in the CD spectrum (Figure 2). Additionally, no signals are observed at longer wavelength than 230 nm for any of the chiral carboxylate guests that were chosen for this study (Chart 1). Further, when the chiral guests were added to a

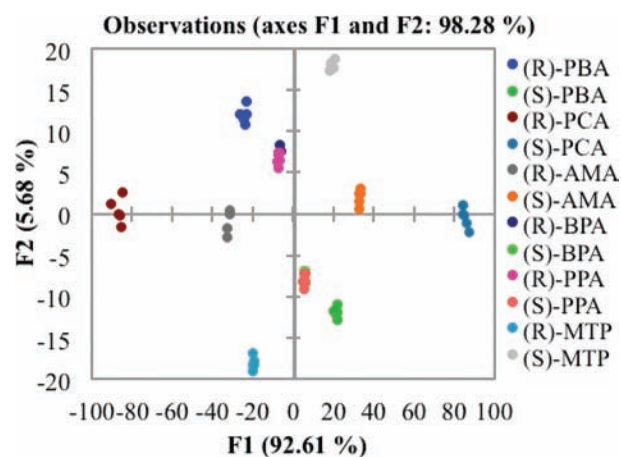


Figure 4. Two-dimensional LDA plot depicting the response of host **1** to each carboxylate guest.

solution containing only $\text{Cu}(\text{ClO}_4)_2$, an absence of signals was also noted. Any signal observed above 230 nm is therefore produced by the formation of a complex between host **1** and a chiral carboxylate guest. For example, the association between host **1** and chiral guest PBA was studied to determine whether or not a helical twist would be imparted on the complex. The CD spectrum was recorded with 2 equiv of PBA relative to host **1** in HEPES buffer (75% acetonitrile, 25% water) at pH 7.4, and hence, the carboxylate is the dominant species. The addition of the analyte produced a CD couplet indicative of ECCD, with a λ_{max} for the first Cotton effect (CE) occurring at 238 nm (Figure 2) and the second CE at 227 nm. The λ_{max} in the isotropic UV spectrum occurs at 233 nm, near the null in the CD spectrum and consistent with the ECCD assignment. The first CE will be used to represent the observed signal. As can be seen in Figure 2, the (*R*)-enantiomer of PBA gave a negative CD couplet while the (*S*)-enantiomer gave a positive couplet. These are indicative of P-type and M-type propeller twists, respectively.⁵⁷ The exciton chirality assignment involves the evaluation of the orientation of the transition dipole moments for the two quinoline chromophores.⁵⁷ Drawing an arc from the vector nearest the viewer toward the one further away gives a positive chirality assignment, which corresponds to a positive couplet in the ECCD spectrum. Thus, in these structures an M propeller will give a positive ECCD couplet. These spectra confirmed that enantiomeric complexes are formed, where the stereocenter of PBA determines the twist of the two quinoline substituents in complex **1**.

The titration of each enantiomer of PBA into host **1** showed saturation of the CD signal when 1 equiv of guest had been added (Figure 3A). Quantification of this binding proved to be problematic, as necessary dilution diminished the observed CD signals. The difference in the size of the groups attached to the stereocenter was postulated to affect the magnitude of the CD signal. Hence, each enantiomer of every guest was added to the host and the CD signal was recorded. An amount of 2 equiv of each guest was used to ensure that host saturation had been reached, and thereby the signal would no longer have a concentration dependence. As expected, the CD spectra were unique for each guest. All of the (*S*)-enantiomers showed the same positive first CE, with the only variance being the magnitude and shape of the curve (Figure 3B). In addition, each enantiomer of guest gave a

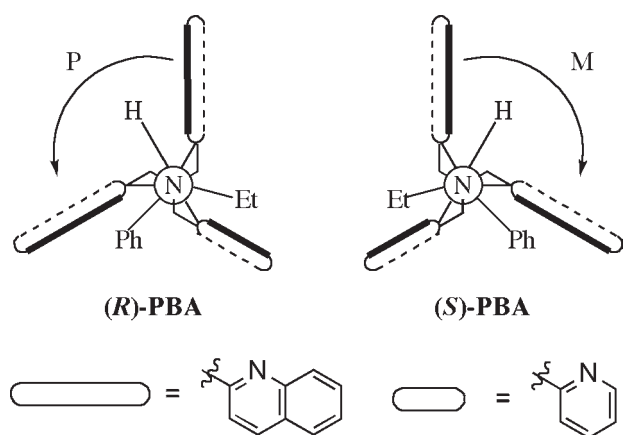


Figure 5. Newman projections for host **1** with each enantiomer of PBA bound. An M-propeller gives (+) chirality for the orientation of the quinoline electronic dipole moments.

CD spectrum that was a mirror image of the other. The configuration of the stereocenter can be assigned based on the sign of the first CD, where all (*R*)-stereocenters gave a negative signal and the (*S*)-stereocenters a positive signal. Because both the magnitude and shape of the curves varied, we postulated that the identity of the carboxylates could be differentiated with pattern recognition protocols.

4. CD Data Analyses. In order to determine the identity of the chiral carboxylates, linear discriminant analysis (LDA) was applied as a statistical analysis technique.^{58,59} LDA creates functions based on the input data with the purpose of maximizing the distance between classes of analytes while minimizing the separation of individual points within a single analyte class. LDA is known as a supervised technique because the identity of each data point is known when the data are input. To this end, five repetitions were recorded for each enantiomer of each guest with 2 equiv of guest added relative to host **1**, making up a total of 70 samples (Figure 4). The CD signals between 235 and 265 nm recorded at 1 nm intervals were analyzed. These wavelengths were chosen because they represent the region of the CD spectrum that changes the most with addition of guest, omitting the shorter wavelength that may change slightly from the phenyl rings of some of the carboxylate guests.

The LDA plot showed good discrimination of the carboxylate guests, with the exception of PPA and BPA. The greatest axis of differentiation, F1, corresponds to the configuration of the stereocenter. All of the (*R*)-enantiomers show up on the negative side of the plot, with the (*S*)-enantiomers on the positive. The values on the F1 axis furthest from zero represent the largest CD signals, while those closest represent the smallest signals. The enantiomers of each guest are reflected through the origin onto each other. The second axis of differentiation, F2, represents a much smaller amount of sample variance. This variance is attributed to the shape of the curves because there are points where the CD spectra cross each other (Figure 3B).

The predictive power of the plot was determined through a leave-one-out technique, known as a jack-knife analysis. This method omits a single data point and creates a new set of functions in its absence. The point is then assigned to a group based on these new functions, with its successful placement representing the validity of the plot. This is repeated for each data point, and a percentage is calculated. This particular LDA plot

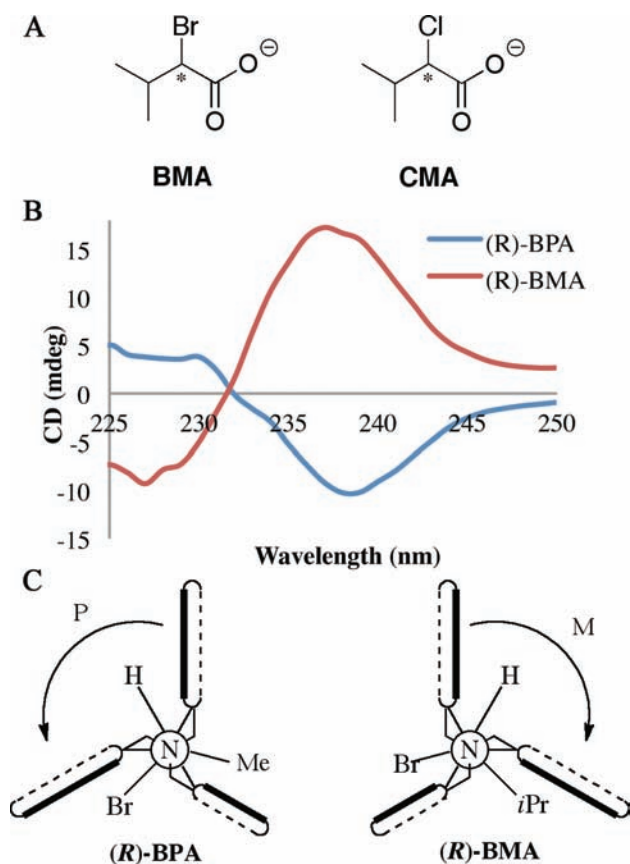


Figure 6. (A) Chemical structures of the additional guests analyzed. (B) CD spectrum of host **1** (0.5 mM) with indicated guest (1.0 mM) in default buffer. (C) Newman projections of host **1** with the (*R*)-enantiomer of the indicated guest bound.

gave a 98.25% jack-knife analysis, indicating that it is very successful in assigning the identity of the carboxylates.

The most important factor for discriminating the identity of the guests is the magnitude of the CD signal. A larger signal rises from a larger twist between the quinoline groups assembled around the copper metal center. A Newman projection of host **1** with PBA bound was created for this system looking down the tertiary amine nitrogen to copper bond, similar to the crystal structure shown in Figure 1B. This orientation allows for facile visualization of the propeller twist (Figure 5). Thus, the front atom of the Newman projection is the tertiary nitrogen atom of the ligand. The view down the Newman projection represents a linear arrangement of this tertiary amine, metal center, followed by the circle showing the carboxylate, and last the α -carbon to the carboxylate group (Figure S11).

Using this Newman projection as a model, we constructed a rationalization of the CD spectra as follows. In the absence of a chiral guest, the complex exists in two enantiomeric propeller-like conformations, with the propeller formed by the planes of the heterocycles. Upon forming a complex, the guest minimizes steric interactions with the host with the smallest substituent on the stereocenter, hydrogen, placed between the quinoline groups. The proximity of the medium and large groups near the chromophores biases adoption of a particular propeller conformation, with the orientation of the stereocenter determining the direction of the twist. Thus, the (*R*)-enantiomer leads to an M-type propeller while the (*S*)-enantiomer prefers a P-type

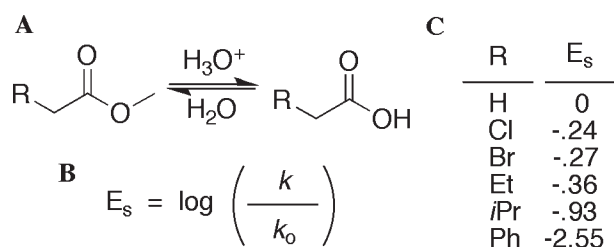


Figure 7. (A) Acid-catalyzed hydrolysis of an ester used by Taft to study steric size. (B) Equation used to calculate group size, known as E_s . (C) Taft parameters for selected substituent groups.

propeller (Figure 5). This model accurately predicts the helicity that is observed for homochiral carboxylate guests. The varying intensities of CD signals for different complexes may be affected by several factors, although specific steric interactions between the quinolines and groups attached to the carboxylate chiral center appear to play a dominant role.

In order to test that steric size of the substituents on the stereocenter is the cause of the sign of the CD signal, we expanded the scope of the study to include guests BMA and CMA (Figure 6A). The homochiral enantiomers of BPA and BMA have the same molecular orientation in space, as designated by the Cahn–Ingold–Prelog (CIP) rules for assigning group priority in stereochemical determination.⁶⁰ By exclusion of the carboxylate that is bound to the metal center, the bromine gets the highest priority, followed by the alkyl group, and finally hydrogen. In the case of BPA, the steric size of the groups follows along with these CIP rules. This is not the case, however, considering BMA. The isopropyl group is expected to be larger than bromine, resulting in the opposite configuration when considering steric size.⁶¹ Indeed, the observed CD spectrum for (*R*)-BMA gives a positive first Cotton effect, the opposite of the signal observed for (*R*)-BPA (Figure 6B), providing evidence for the steric model that has been proposed. Next, we turned our focus to quantifying the magnitude of the observed signals.

In order to understand how steric size is related to the size of the observed CD signals, Taft parameters were applied.⁶⁰ The Taft parameters quantify the steric size of a group by a linear free energy relationship, derived from the study of the acid-catalyzed hydrolysis of an ester (Figure 7). Comparing the rate of hydrolysis for a substrate in question to the reference reaction where R is hydrogen gives the steric size of the group by way of the parameter E_s . Taft used the acid-catalyzed hydrolysis to elucidate the steric effects in the absence of electronic considerations. He reasoned that the acid-catalyzed reaction was less affected by electronics because the rate determining step, nucleophilic addition to the carbonyl, maintained the same charge throughout. The size of the additional proton is assumed to be negligible and is present in both structures. In the case of the base-catalyzed reaction, the rate determining step takes a neutral molecule and gives it a negative charge, making this pathway much more susceptible to electronic effects.

Since steric factors were found to be the basis for the sign of the CD signal, these sizes were used to understand the magnitude of the observed signal. The largest group on the carboxylate stereocenter is expected to be pointed in the direction of the pyridine ring and thus have a more subtle effect on the imparted twist. Therefore, in this model the twist will be governed by the medium and small groups because they will have more of an interaction with the

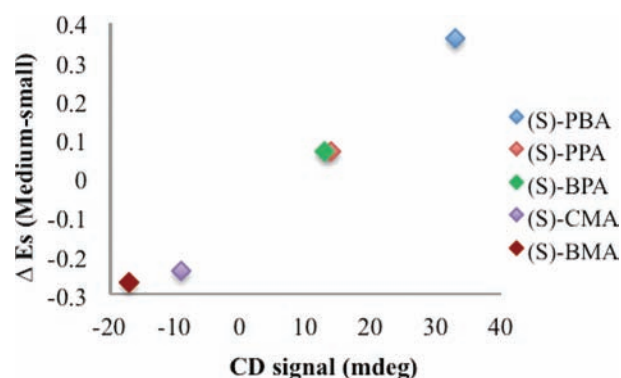


Figure 8. Graph of the CD signal of the (*S*)-enantiomer of the indicated guest plotted against the difference in the E_s values of the medium and small sized groups.

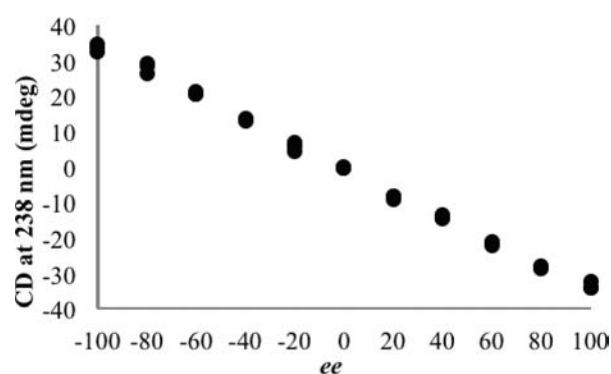


Figure 9. CD signal at 238 nm with varying ee values for a solution of PBA (1.0 mM) and host **1** (0.5 mM) in default buffer.

quinoline chromophores, represented pictorially in Figure 5. The guests (PBA, PPA, BPA, BMA, and CMA) that were used for this analysis were selected because the E_s values for the relevant substituents on the stereocenter were known. The difference in the E_s values between the medium and the smallest groups was plotted against the observed CD signal for the (*S*)-enantiomers of the guests and is shown in Figure 8. Because the orientation of the groups in BMA and CMA were reversed, the difference in E_s values was expressed as a negative number. The resulting graph is linear, indicating that the magnitude of the CD signal directly varies with the difference in steric size of the substituent groups. It is also important to note that this plot shows an overlap between the two guests PPA and BPA. These were the two guests that were not fully differentiated by the LDA analysis presented earlier because they gave CD signals that were very similar.

5. Analysis of ee. After determination of the identity of the carboxylates and rationalization of the size and magnitude of the observed CD signals, our focus shifted toward determining ee values. For this task, ee calibration curves were created for three of the carboxylates that were studied. The values for these curves vary between 100% and -100% ee, as it is calculated by $[(R) - (S)] / [(R) + (S)] \times 100$, and hence an ee value of 100% corresponds to only the (*R*)-enantiomer. The carboxylates studied, PCA, PBA, and PPA, were chosen, as they cover a broad range of CD signal amplitudes. To ensure that the signal was saturated and free of concentration dependence, 2 equiv of total carboxylate were added relative to host **1**.

Table 1. Errors in ee Calculations of Unknown Guests, as Related to Δ CD Signal

guest	av error (%)	Δ CD ₂₃₈ (mdeg)
PBA	3.2	68.8
PCA	1.8	200.8
PPA	4.1	25.3

A representative calibration curve for PBA is given in Figure 9. This curve fits a linear regression with $R^2 = 0.99$, and the resulting equation allowed the magnitude of the CD signal to be related to the ee of the solution. Eight unknown solutions of each enantiomeric carboxylate were prepared independent of the samples used for the calibration curves, and their CD spectra were recorded. The signal observed at 238 nm was then used to determine ee values, and the average absolute error was calculated (Table 1). The absolute difference between the actual and calculated values of ee is used herein to denote the average error and was calculated for each analyte studied. While the observed error did vary according to the difference in amplitude between each enantiomer of the guest, with the greatest amplitude giving the lowest error, there was very little difference in the errors. The average error that was found was 3.0% for the guests studied. This error is well within the acceptable range of errors for HTS.³

SUMMARY

The previously described method used ECCD to determine the absolute configuration of chiral carboxylates. Each enantiomer of a guest gave rise to a mirror image CD spectrum, indicating the formation of enantiomeric complexes. The magnitude of the signal, as well as the shape, allowed for separation of the identities of the carboxylate guests by the pattern recognition protocol LDA. Calibration curves were created for guests using samples of known ee values for three guests. The CD signals of samples of unknown ee value were related by this calibration curve to an ee value, with an average error of 3.0%. The host was easily synthesized, and no extra treatment of the analytes was required. Further studies are currently being undertaken in order to extend the scope of this method, expanding to more elaborate guest structures and moving the stereocenter to more remote locations relative to the carboxylate.

ASSOCIATED CONTENT

Supporting Information. Host synthesis, titration data, and unknown ee calculations. This material is available free of charge via the Internet at <http://pubs.acs.org>.

AUTHOR INFORMATION

Corresponding Author

*anslyn@austin.utexas.edu

Notes

⁵Deceased March 28, 2010.

ACKNOWLEDGMENT

We thank the National Institutes of Health (Grant GM77437) and the Welch Foundation (Grant F-1151) for financial support, Michelle Adams for making unknown samples, and Professor

Adam Urbach and Trinity University for use of the CD spectrometer. J.W.C. thanks the National Science Foundation (Grant CHE-0848234) for financial support.

REFERENCES

- (1) Maruoka, K.; Ooi, T. *Chem. Rev.* **2003**, *103*, 3013–3028.
- (2) Ma, L.; White, P. S.; Lin, W. B. *J. Org. Chem.* **2002**, *67*, 7577–7586.
- (3) Lee, S. J.; Lin, W. B. *J. Am. Chem. Soc.* **2002**, *124*, 4554–4555.
- (4) Dybtssev, D. N.; Nuzhdin, A. L.; Chun, H.; Bryliakov, K. P.; Talsi, E. P.; Fedin, V. P.; Kim, K. *Angew. Chem., Int. Ed.* **2006**, *45*, 916–920.
- (5) Gardimalla, H. M. R.; Mandal, D.; Stevens, P. D.; Yen, M.; Gao, Y. *Chem. Commun.* **2005**, 4432–4434.
- (6) Terauchi, T.; Asai, N.; Yonaga, M.; Kume, T.; Akaike, A.; Sugimoto, H. *Tetrahedron Lett.* **2002**, *43*, 3625–3628.
- (7) Buck, R. T.; Coe, D. M.; Drysdale, M. J.; Moody, C. J.; Pearson, N. D. *Tetrahedron Lett.* **1998**, *39*, 7181–7184.
- (8) Nicolaou, K. C.; Snyder, S. A. *Classics in Total Synthesis II: More Targets, Strategies, Methods*; Wiley-VCH: Weinheim, Germany, 2003.
- (9) Nicolaou, K. C.; Sorensen, E. J. *Classics in Total Synthesis: Targets, Strategies, Methods*; VCH: Weinheim, Germany, 1996.
- (10) Kato, D.; Mitsuda, S.; Ohta, H. *J. Org. Chem.* **2003**, *68*, 7234–7242.
- (11) Groger, H. *Chem. Rev.* **2003**, *103*, 2795–2827.
- (12) Reetz, M. T. *Angew. Chem., Int. Ed.* **2001**, *40*, 284–310.
- (13) Bobbitt, D. R.; Linder, S. W. *TrAC, Trends Anal. Chem.* **2001**, *20*, 111–123.
- (14) Welch, C. J.; Hyun, M. H.; Kubota, T.; Schafer, W.; Bernardoni, F.; Choi, H. J.; Wu, N. J.; Gong, X. Y.; Lipshutz, B. *Chirality* **2008**, *20*, 815–819.
- (15) Thompson, R. J. *Liq. Chromatogr.* **2005**, *28*, 1215–1231.
- (16) Schurig, V. *J. Chromatogr., A* **2001**, *906*, 275–299.
- (17) Wang, W.; Ma, F.; Shen, X.; Zhang, C. *Tetrahedron: Asymmetry* **2007**, *18*, 832–837.
- (18) Yang, D.; Li, X.; Fan, Y. F.; Zhang, D. W. *J. Am. Chem. Soc.* **2005**, *127*, 7996–7997.
- (19) Cuevas, F.; Ballester, P.; Pericas, M. A. *Org. Lett.* **2005**, *7*, 5485–5487.
- (20) Superchi, S.; Bisaccia, R.; Casarini, D.; Laurita, A.; Rosini, C. *J. Am. Chem. Soc.* **2006**, *128*, 6893–6902.
- (21) Qing, G. Y.; He, Y. B.; Wang, F.; Qin, H. J.; Hu, C. G.; Yang, X. *Eur. J. Org. Chem.* **2007**, 1768–1778.
- (22) Mei, X. F.; Wolf, C. *J. Am. Chem. Soc.* **2006**, *128*, 13326–13327.
- (23) Mei, X. F.; Wolf, C. *J. Am. Chem. Soc.* **2004**, *126*, 14736–14737.
- (24) Jadhav, V. D.; Schmidtchen, F. P. *J. Org. Chem.* **2008**, *73*, 1077–1087.
- (25) Walba, D. M.; Eshdat, L.; Korblova, E.; Shao, R. F.; Clark, N. A. *Angew. Chem., Int. Ed.* **2007**, *46*, 1473–1475.
- (26) Berova, N.; Pescitelli, G.; Petrovic, A. G.; Proni, G. *Chem. Commun.* **2009**, 5958–5980.
- (27) McCormick, T. M.; Wang, S. I. *Inorg. Chem.* **2008**, *47*, 10017–10024.
- (28) Leung, D.; Folmer-Andersen, J. F.; Lynch, V. M.; Anslyn, E. V. *J. Am. Chem. Soc.* **2008**, *130*, 12318–12327.
- (29) Zhu, L.; Zhong, Z. L.; Anslyn, E. V. *J. Am. Chem. Soc.* **2005**, *127*, 4260–4269.
- (30) Folmer-Andersen, J. F.; Kitamura, M.; Anslyn, E. V. *J. Am. Chem. Soc.* **2006**, *128*, 5652–5653.
- (31) Nieto, S.; Lynch, V. M.; Anslyn, E. V.; Kim, H.; Chin, J. *Org. Lett.* **2008**, *10*, 5167–5170.
- (32) Nieto, S.; Lynch, V. M.; Anslyn, E. V.; Kim, H.; Chin, J. *J. Am. Chem. Soc.* **2008**, *130*, 9232–9233.
- (33) Felten, C.; Foret, F.; Minarik, M.; Goetzinger, W.; Karger, B. L. *Anal. Chem.* **2001**, *73*, 1449–1454.
- (34) Reetz, M. T.; Hermes, M.; Becker, M. H. *Appl. Microbiol. Biotechnol.* **2001**, *55*, 531–536.

- (35) Korbel, G. A.; Lalic, G.; Shair, M. D. *J. Am. Chem. Soc.* **2001**, *123*, 361–362.
- (36) Kacprzak, K.; Grajewski, J.; Gawronski, J. *Tetrahedron: Asymmetry* **2006**, *17*, 1332–1336.
- (37) Kubo, Y.; Ishida, T.; Kobayashi, A.; James, T. D. *J. Mater. Chem.* **2005**, *15*, 2889–2895.
- (38) Berova, N.; Di Bari, L.; Pescitelli, G. *Chem. Soc. Rev.* **2007**, *36*, 914–931.
- (39) Zhang, J.; Holmes, A. E.; Sharma, A.; Brooks, N. R.; Rarig, R. S.; Zubieta, J.; Canary, J. W. *Chirality* **2003**, *15*, 180–189.
- (40) Holmes, A. E.; Zahn, S.; Canary, J. W. *Chirality* **2002**, *14*, 471–477.
- (41) Zahn, S.; Canary, J. W. *Org. Lett.* **1999**, *1*, 861–864.
- (42) Pfeiffer, P.; Quehl, K.; Tappermann, F. *Ber. Dtsch. Chem. Ges.* **1930**, *63B*, 1301–1308.
- (43) Canary, J. W.; Mortezaei, S.; Liang, J. A. *Coord. Chem. Rev.* **2010**, *254*, 2249–2266.
- (44) Holmes, A. E.; Das, D.; Canary, J. W. *J. Am. Chem. Soc.* **2007**, *129*, 1506–1507.
- (45) Hor, K.; Gimple, O.; Schreier, P.; Humpf, H. U. *J. Org. Chem.* **1998**, *63*, 322–325.
- (46) Matile, S.; Berova, N.; Nakanishi, K.; Fleischhauer, J.; Woody, R. W. *J. Am. Chem. Soc.* **1996**, *118*, 5198–5206.
- (47) Matile, S.; Berova, N.; Nakanishi, K.; Novkova, S.; Philipova, I.; Blagoev, B. *J. Am. Chem. Soc.* **1995**, *117*, 7021–7022.
- (48) Yang, Q.; Olmsted, C.; Borham, B. *Org. Lett.* **2002**, *4*, 3423–3426.
- (49) Tabei, J.; Shiotsuki, M.; Sanda, F.; Masuda, T. *Macromolecules* **2005**, *38*, 9448–9454.
- (50) Gawronski, J.; Grajewski, J.; Drabowicz, J.; Mikolajczyk, M. *J. Org. Chem.* **2003**, *68*, 9821–9822.
- (51) Dalisay, D. S.; Tsukamoto, S.; Molinski, T. F. *J. Nat. Prod.* **2009**, *72*, 353–359.
- (52) Wei, N.; Murthy, N. N.; Chen, Q.; Zubieta, J.; Karlin, K. D. *Inorg. Chem.* **1994**, *33*, 1953–1965.
- (53) Gan, W.; Jones, S. B.; Reibenspies, J. H.; Hancock, R. D. *Inorg. Chim. Acta* **2005**, *358*, 3958–3966.
- (54) Canary, J. W.; Holmes, A. E.; Liu, J. *Enantiomer* **2001**, *6*, 181–188.
- (55) Wei, N.; Murthy, N. N.; Karlin, K. D. *Inorg. Chem.* **1994**, *33*, 6093–6100.
- (56) Holmes, A. E.; Simpson, S. A.; Canary, J. W. *Monatsh. Chem.* **2005**, *136*, 461–475.
- (57) Castagnetto, J. M.; Xu, X.; Berova, N. D.; Canary, J. W. *Chirality* **1997**, *9*, 616–622.
- (58) Johnson, R. A.; Wilchern, D. W. *Applied Multivariate Statistical Analysis*; Prentice-Hall: Englewood Cliffs, NJ, 1982.
- (59) Buryak, A.; Severin, K. *J. Am. Chem. Soc.* **2005**, *127*, 3700–3701.
- (60) Cahn, R. S.; Ingold, C.; Prelog, V. *Angew. Chem., Int. Ed. Engl.* **1966**, *5*, 385–415.
- (61) Taft, R. W., Jr. *Steric Eff. Org. Chem.* **1956**, 556–675.